



*Solutions for*

# **AGRICULTURE & FORESTRY**

 **Bonfiglioli**





# Solutions for

## CONTENTS

<b>AGRICULTURE &amp; FORESTRY</b> .....	<b>5</b>
<b>AUGER DRIVES</b>	
300 Series.....	6
700T Series.....	8
<b>WHEEL DRIVES</b>	
600W Series.....	10
600WT Series.....	12
600WE Series.....	14
Integrated Service and Parking brakes for 600 Series wheel drives.....	16
<b>TRACK DRIVES</b>	
700C Series.....	18
700CE Series.....	20
F Series.....	22
<b>SLEW DRIVES</b>	
700T Series.....	24
S Series.....	26
<b>OUR PROJECTION INTO THE FUTURE</b> .....	<b>28</b>
<b>OUR CONSTANT AMBITION</b> .....	<b>29</b>
<b>OUR GLOBAL PRESENCE</b> .....	<b>30</b>



# Engineering Solutions



[WWW.BONFIGLIOLI.COM](http://WWW.BONFIGLIOLI.COM)

# AGRICULTURE & FORESTRY

---

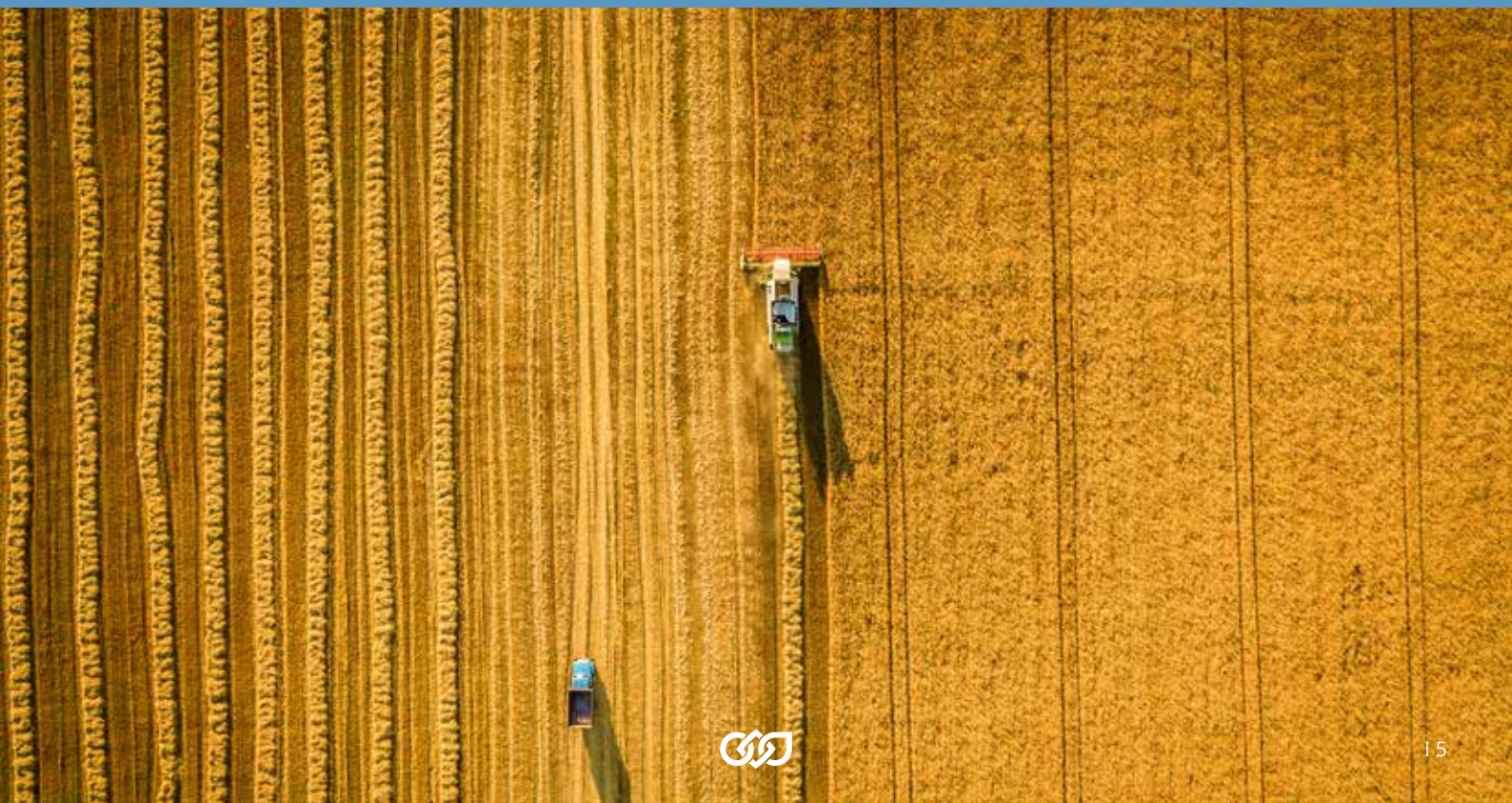
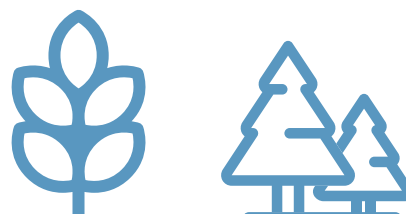
## THE MOST RELIABLE SOLUTIONS FOR AGRICULTURE AND FOREST MACHINERY

With more than 40 years of experience alongside major players on the market, Bonfiglioli is able to create, design and produce tailored-made drives for a wide range of applications in the agricultural sector, such as sprayers, harvesters, feed mixers and forest machines.

Through innovation, reliability, efficiency, cost-optimization and flexibility, Bonfiglioli experts help you to meet your customers' needs and requirements.

The vast range of customised solutions and extensive expertise in the industry make Bonfiglioli the ideal partner for all manufacturers of agricultural and forest machinery.

Furthermore Bonfiglioli offers integrated electric powerdrives replacing the conventional hydraulic application. The electrification of small agriculture machines in their main functions is a first step ahead, improving efficiency, reducing CO2 emissions and noise levels.



## AUGER DRIVES



### 300 SERIES

The 300 series is compact and powerful. Its planetary drive train makes them the ideal choice for all severe duty applications where shock loads and impacts are more the rule than the exception. The product configuration is highly versatile, due to several options for mounting, gear layout, output shaft and motor interface.



HYDRAULIC SOLUTIONS



ELECTRIC SOLUTIONS



SELF-PROPELLED  
FEED-MIXERS



TRAILED  
FEED-MIXERS

#### BRAKE OPTIONS

- Hydraulically released parking brake on request

#### OUTPUT

- Foot and flange mounted
- Output shaft: solid with key, splined, splined hollow, hollow with shrink disc

#### INPUT

- Flanged axial piston hydraulic motors
- Hydraulic orbit motors
- IEC and Nema motor adapters
- Solid input shaft

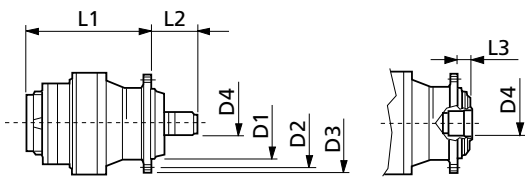
#### TORQUE (Nm)

307 M	15,500
309 M	23,000
310 M	33,500
311 M	49,000
313 M	60,000



TYPE	MAX POWER	MAX INPUT SPEED	RANGE OF RATIOS	DESIGN
	kW	rpm	1:	
307 M	100	2.500	3.4 - 336	A
309 M	130	2.500	3.4 - 336	B
310 M	150	2.000	4 - 350	B
311 M	180	2.000	4 - 291	B
313 M	200	2.000	4 - 304	B

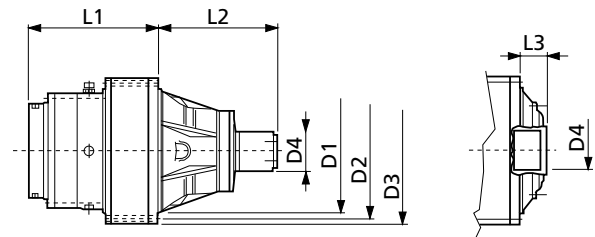
**DESIGN A**  
300 - 307



Output HZ

Output FZ

**DESIGN B**  
309 - 325



Output HZ

Output FZ

TYPE	D1	D2	D3	D4	L1 (2 stages)	L2	L3
307 M	230	295	325	80x74 DIN 5482	300	162	36
309 M	278	314	348	80x74 DIN 5482	215	231	82
310 M	340	370	400	100x94 DIN 5482	245	290	95
311 M	358	390	428	100x94 DIN 5482	250	320	88
313 M	385	415	445	120x3 DIN 5480	310	357	81



## AUGER DRIVES



### 700T SERIES

With a reliable optimized design, the Bonfiglioli 700T Series for auger applications meets all feed mixer requirements. The different interfaces make this series very flexible. The two shafts configuration for the in-line and multi-auger models is a fundamental.



HYDRAULIC SOLUTIONS



ELECTRIC SOLUTIONS



SELF-PROPELLED  
FEED-MIXERS



TRAILED  
FEED-MIXERS

#### GEAR RATIOS

• 15.4 ... 18.3

#### INPUT SPEED

• 540 rpm

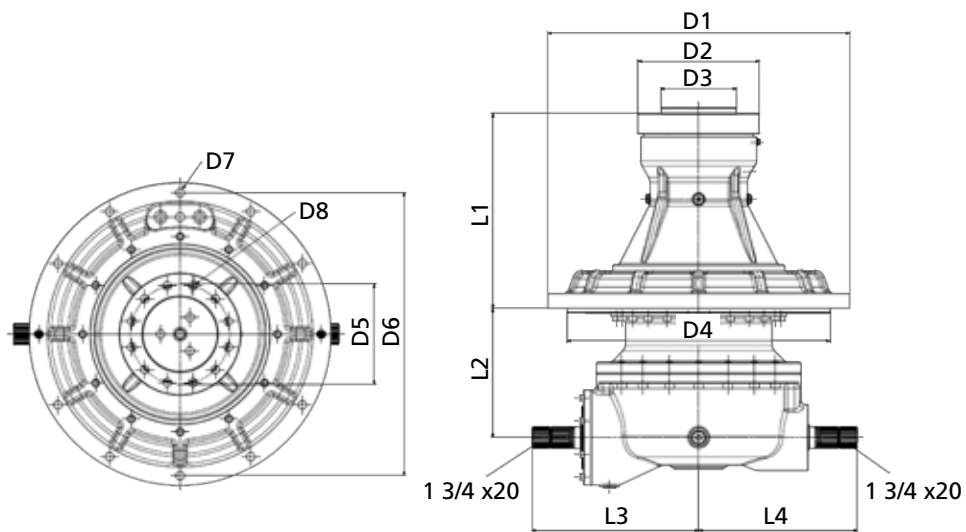
#### TORQUE (Nm)

709 T	15,000
711 T	21,000





TYPE	NOMINAL OUTPUT TORQUE	MAX. OUTPUT TORQUE	MAX. INPUT SPEED	RANGE OF RATIOS
	Nm	Nm	rpm	1:
709 T	15.000	30.000	540	15.4 - 18.2
711 T	21.000	42.000	540	15.4 - 18.3



TYPE	D1	D2	D3	D4	D5	D6	D7	D8	L1	L2	L3	L4
709 T	620	250	154.8	540	205	580	D18 no.12	M20x1.5 no.12	399	285	342	346
711 T	620	250	154.8	540	205	580	D18 no.12	M20x1.5 no.12	399	305	342	346

## WHEEL DRIVES



### 600W SERIES

The Bonfiglioli 600W Series is the best solution when designing wheeled off-road machinery. With a compact design, high torque and load capacities, a negative multi-disk parking brake and an optional disengagement device to tow the vehicle in an emergency, these solutions precisely match the application requirements.



HYDRAULIC SOLUTIONS



COMBINE HARVESTERS



FORAGE HARVESTERS



GRAPE HARVESTERS



POTATO, CARROT HARVESTERS



SELF-PROPELLED FEED-MIXERS



SELF-PROPELLED SPRAYERS



SUGAR CANE HARVESTERS

#### INPUT SPEED

- up to 4.000 rpm

#### BRAKE OPTIONS

- Hydraulically released parking brake on request

#### APPLICABLE MOTORS

- Cartridge axial piston hydraulic motors
- Flanged axial piston hydraulic motors
- Hydraulic orbit motors

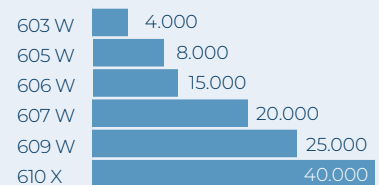
#### MAIN OPTIONS

- Dynamic & service brake

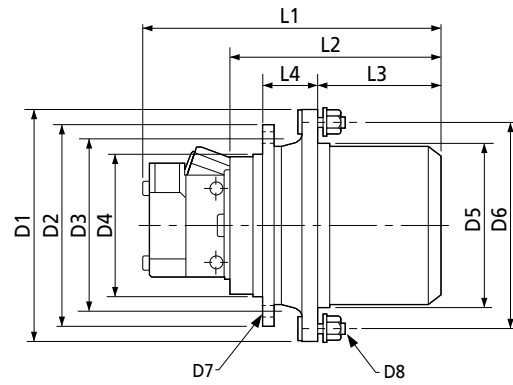
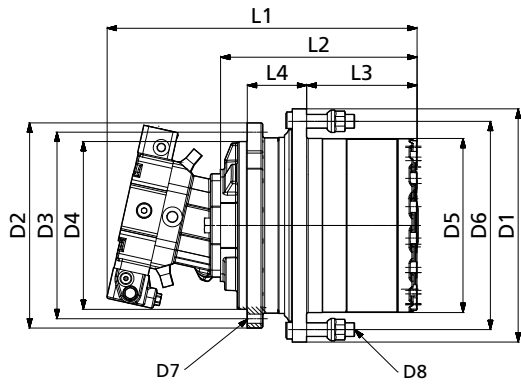
#### KEY BENEFITS

- Rotating housing flange with studs to fit wheels and drums
- Rugged design
- High torque capacity
- High load capacity
- Mechanical lifetime seals
- Compact design
- Optional mechanical gear disengagement on request

#### TORQUE (Nm)



TYPE	RANGE OF RATIOS	MAX. INPUT SPEED	HYDRAULIC MOTOR DRIVE	MOTOR DISPLACEMENT	BRAKING TORQUE	MIN. OPENING PRESSURE	WEIGHT	MACHINE WEIGHT	DESIGN
	1:	min <sup>-1</sup>		cc/rev	Nm	bar	kg	tons	
603 W	19 ÷ 40	3.500	Axial piston motor fixed or variable displacement	28 ÷ 45	210	18	45	up to 8	B
605 W	22 ÷ 53	3.500		28 ÷ 60	220 ÷ 310	10 - 20	70	5 ÷ 8	B
606 W	20 ÷ 128	4.000		28 ÷ 80	300 ÷ 800	15 - 20	110	up to 14	A
607 W	26 ÷ 154	4.000		28 ÷ 80	300 ÷ 800	15 - 20	140	14 ÷ 18	A
609 W	22 ÷ 147	4.000		45 ÷ 160	300 ÷ 800	15 - 20	170	16 ÷ 22	A
610 X	22.5 ÷ 51.4	4.000		60 ÷ 160	800 ÷ 1.200	15 - 20	200	25 ÷ 35	A



TYPE	DESIGN	D1	D2	D3	D4	D5	D6	D7	D8	L1	L2	L3	L4
603 W	B	280	270	230	190	200	245	M16x2 no.8	M18x1.5 no.6	Based motor type	230	128	72
605 W	B	310	270	230	190	220	275	M16x2 no.12	M20x1.5 no.8		260	158	72
606 W	A	370	330	300	270	280	335	M16x2 no.18	M22x1.5 no.10		330	200	115
607 W	A	400	317	285	240	300	355	M20x2.5 no.20	M18x1.5 no.20		335	233	82
609 W	A	435	375	340	300	350	400	M20x2.5 no.16	M22x1.5 no.16		350	243	91
610 X	A	440	410	370	330	360	400	M20x2.5 no.20	M20x2.5 no.16		383	268	90

## WHEEL DRIVES



### 600WT SERIES

Bonfiglioli 600WT wheel drives are the best choice for wheeled agricultural equipment, such as self-propelled agricultural sprayers. This solution is the perfect combination of proven mechanical parts, with a new, integrated 45 & 68 cc variable hydraulic motor, especially developed for closed-loop, highly demanding applications.



HYDRAULIC SOLUTIONS



SELF-  
PROPELLED  
SPRAYERS

#### INPUT SPEED

- up to 4.000 rpm

#### GEAR RATIOS

- 22 ... 53

#### MOTORS

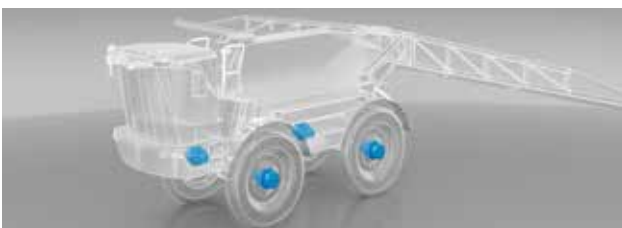
- Integrated swash plate variable hydraulic motor
- Available with both hydraulic two position or electric proportional variable displacement control
- Zero displacement capacity

#### KEY FEATURES

- Spring-applied hydraulic-release integrated parking brake
- Faster, easier installation on the machine
- Mechanical gear disengagement
- Speed sensor
- Dynamic service brake with inspection port, directly serviceable from motor side (no need to remove it from the machine)

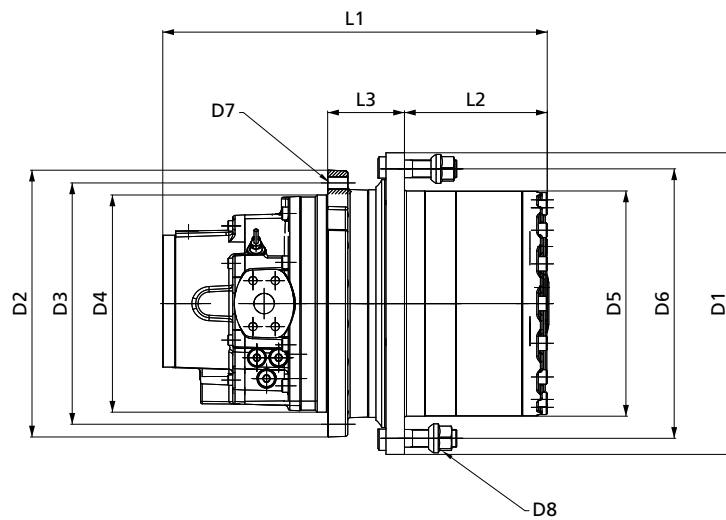
#### TORQUE (Nm)

606 WT 15.000





TYPE	RANGE OF RATIOS	MAX. INPUT SPEED	HYDRAULIC MOTOR DRIVE	MOTOR DISPLACEMENT MIN/MAX	BRAKING TORQUE	MIN. OPENING PRESSURE	WEIGHT	MACHINE WEIGHT
	1:	rpm		cc/rev	Nm	bar	kg	tons
606 WT	23 ÷ 53	4.000		68/25	540	18	100	10 ÷ 15



TYPE	D1	D2	D3	D4	D5	D6	D7	D8	L1	L2	L3
606 WT	375	332	300	270	280	338	M16 n12	M22X1.5 n10	450	177	95

## WHEEL DRIVES FOR HYBRID AGRICULTURE MACHINERY



### 600WE SERIES

Bonfiglioli's 600WE planetary wheel drives have integrated a new high-power density electric motor, instead of a conventional hydraulic motor. This complete mechatronic solution is designed for a low and high voltage system.



ELECTRIC SOLUTIONS



COMBINE HARVESTERS



FORAGE HARVESTERS



POTATO, CARROT HARVESTERS

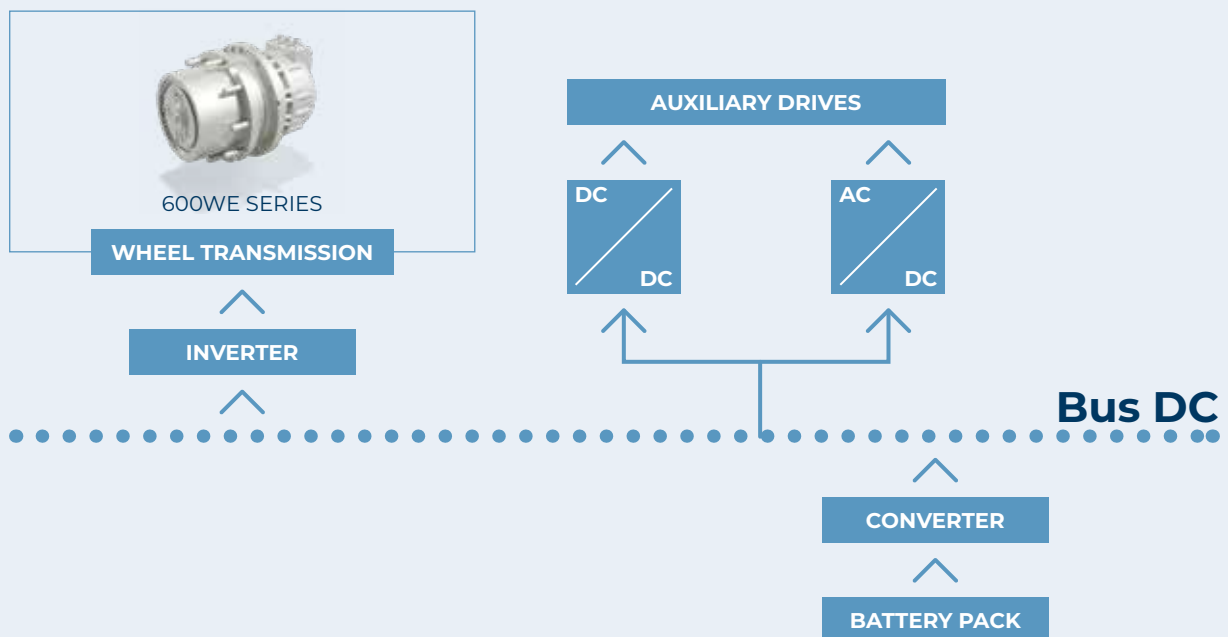


SELF-PROPELLED SPRAYERS



SUGAR CANE HARVESTERS

### FUNCTIONAL DIAGRAM





## 600WE Series

Wheel Drives

### KEY FEATURES

- Shorter axial length thanks to PM e-motor
- Fully integrated design
- Integrated electromagnetic parking brake
- Integrated speed and temperature sensors
- High protection rating



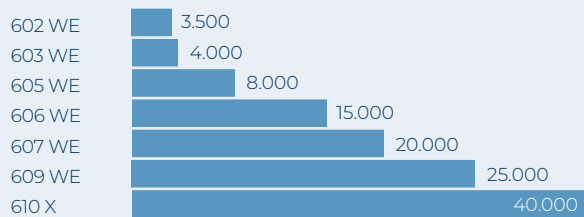
## BPM MOTOR Series

Pump Drives

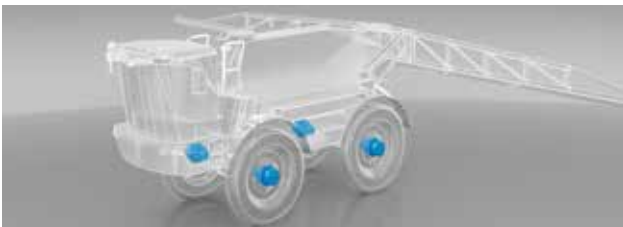
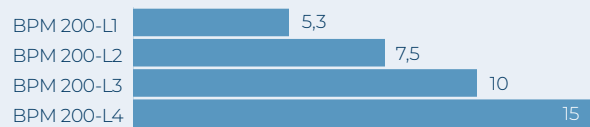
### KEY FEATURES

- Permanent magnet motors
- Suitable for 48-400 Vdc batteries
- Air-cooled
- Aluminum housing
- Protection rating >IP65
- SAE flanges available

### TORQUE (Nm)



### NOMINAL POWER (kW)



## INTEGRATED SERVICE AND PARKING BRAKES FOR 600 SERIES WHEEL DRIVES



### KEY FEATURES

- Compact and modular design
- Compliant with international regulations for service, emergency and parking braking
- Improved modularity of service brake actuation
- Integrated oil immersed brake disc package
- Dedicated piston return system for optimized thermal performance
- Heavy duty discs to maximize thermal capacity for best energy dissipation, even under extreme conditions



COMBINE HARVESTERS



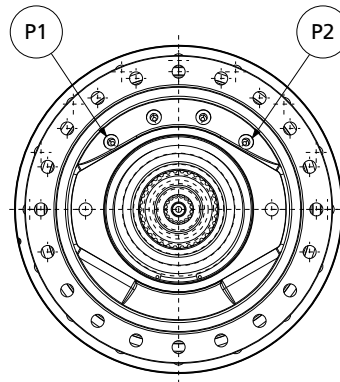
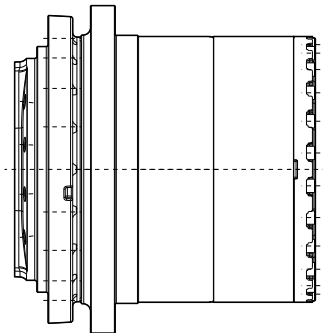
FORAGE HARVESTERS



POTATO, CARROT HARVESTERS



SELF-PROPELLED SPRAYERS

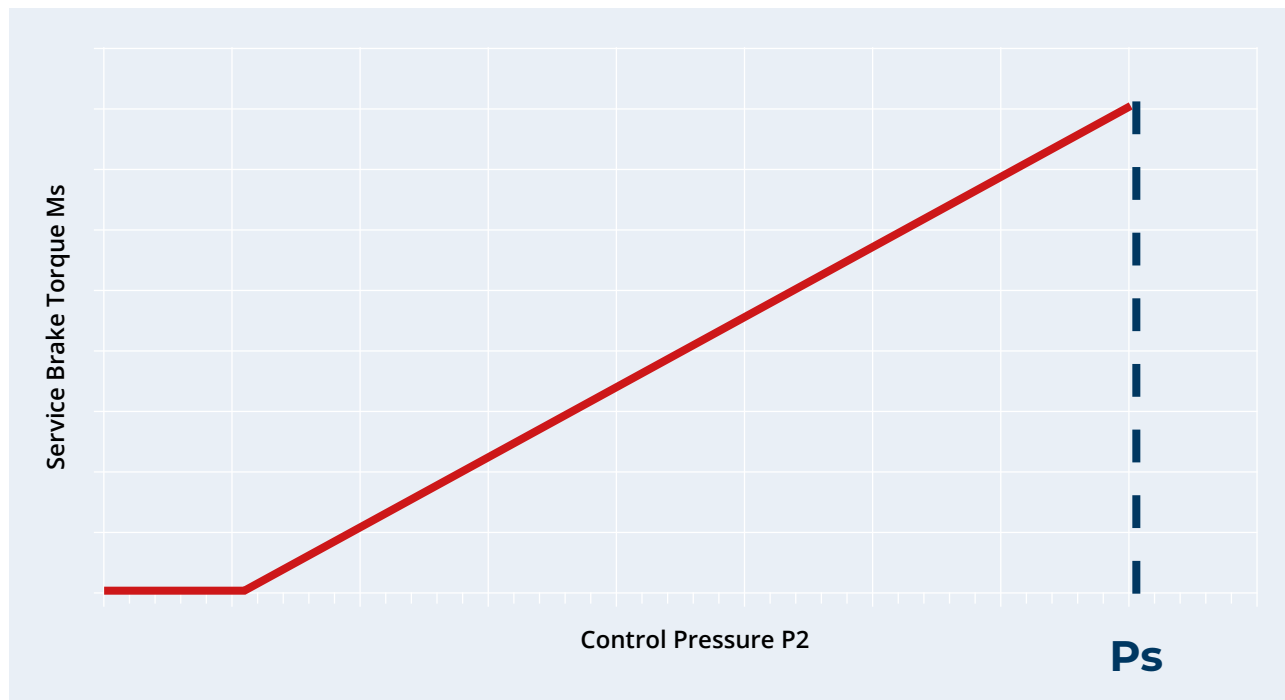


**P1:** static brake port  
**P2:** service brake port

ACTION	P1 PORT	P2 PORT
Parking brake engaged	Not pressurized	Not pressurized
Travel	Pressurized	Not pressurized
Service braking	Pressurized	Pressurized (to modulate the braking torque)



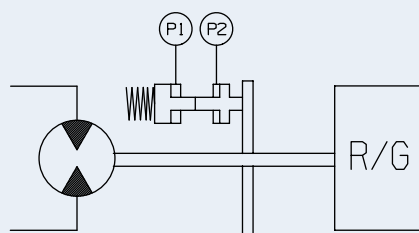
# SERVICE BRAKE PERFORMANCE



GEARBOX MODEL	SERVICE BRAKE		PARKING BRAKE
	MAX TORQUE (MS)	MAX OPERATING PRESSURE (PS)	MAX TORQUE (MP)
	Nm	bar	Nm
606 W	400	70	450
607 W	400	70	450
609 W	600	100	900
610 X	800	150	1.100

The above data are for reference only. To be verified based on actual machine data.

## Hydraulic Diagram



**P1:** static brake port  
**P2:** service brake port

## TRACK DRIVES



### 700C SERIES

Bonfiglioli 700C series units are unsurpassed by any crawler or milling machines. Thanks to compact, rugged design, high torque and load capabilities, and optional mechanical lifetime seals, these solutions are the best possible option for the machine. All units are available with a fail-safe parking brake and most have the option of cartridge type fixed or variable systems.



HYDRAULIC SOLUTIONS



FELLER  
BUNCHERS



LOG  
LOADERS



MULCHER  
MACHINES



RICE  
HARVESTERS



SUGAR CANE  
HARVESTERS

#### INPUT SPEED

- up to 4.000 rpm

#### BRAKE OPTIONS

- Hydraulically released parking brake on request

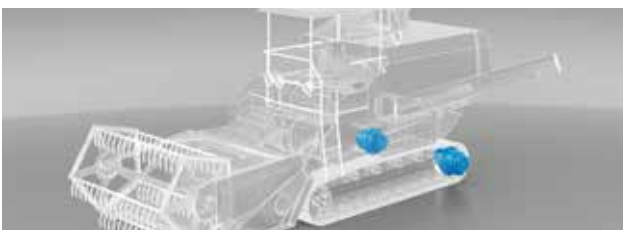
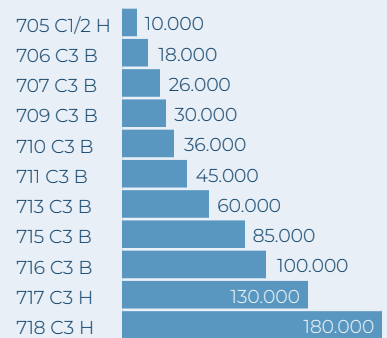
#### APPLICABLE MOTORS

- Cartridge axial piston hydraulic motors
- Flanged axial piston hydraulic motors
- Hydraulic orbit motors

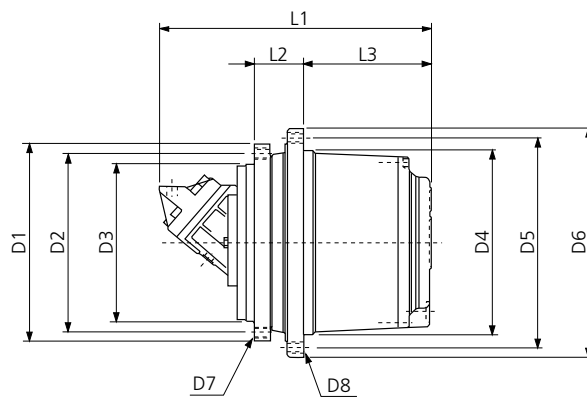
#### KEY FEATURES

- Rotating housing
- Rugged design
- High torque capacity
- High load capacity
- Mechanical lifetime seals
- Compact design

#### TORQUE (Nm)



TYPE	RANGE OF RATIOS	MAX. INPUT SPEED	HYDRAULIC MOTOR DRIVE	MOTOR DISPLACEMENT	BRAKING TORQUE	MIN. OPENING PRESSURE	WEIGHT	MACHINE WEIGHT
	1:	min <sup>-1</sup>		cc/rev	Nm	bar	kg	tons
705 C1 H	5.33	1.000	Orbital motors	160 ÷ 250	250 - 500	10 - 20	80	5
705 C2 H	22 ÷ 53	4.000	Axial piston motor fixed or variable displacement	28 ÷ 60	250 - 500	10 - 20	60	5 ÷ 7
706 C3 B	68 ÷ 173	4.000		28 ÷ 80	250 - 500	10 - 20	95	7 ÷ 13
707 C3 B	55 ÷ 120	4.000		28 ÷ 80	250 - 500	10 - 20	135	13 ÷ 16
709 C3 B	55 ÷ 147	4.000		45 ÷ 160	250 - 600	10 - 20	180	16 ÷ 22
710 C3 B	55 ÷ 166	4.000		60 ÷ 160	250 - 600	10 - 20	200	22 ÷ 28
711 C3 B	71 ÷ 163	4.000		60 ÷ 160	400 - 800	10 - 20	270	28 ÷ 35
713 C3 B	56 ÷ 147	3.500		60 ÷ 160	400 - 800	10 - 20	310	35 ÷ 45
715 C3 B	62 ÷ 156	3.500		60 ÷ 160	600 - 1,000	10 - 20	350	28 ÷ 35
716 C3 B	83 ÷ 174	3.500		60 ÷ 160	800 - 1,200	10 - 20	400	35 ÷ 40
717 C3 H	92 ÷ 211	3.500		80 ÷ 200	800 - 1,200	10 - 20	630	40 ÷ 45
718 C3 H	87 ÷ 263	3.500		80 ÷ 250	800 - 1,200	10 - 20	750	over 45



TYPE	D1	D2	D3	D4	D5	D6	D7	D8	L1	L2	L3
705 C1 H	325	290	250	200	240	280	M16x2 no.10	M20x2.5 no.8	Based motor type	72	96
705 C2 H	270	230	190	220	260	300	M16x2 no.12	M16x2 no.16		72	158
706 C3 B	330	300	270	280	330	370	M16x2 no.18	M16x2 no.18		115	190
707 C3 B	317	285	240	300	340	370	M20x2.5 no.20	M16x2 no.20		82	233
709 C3 B	375	340	300	330	370	400	M20x2.5 no.16	M16x2 no.30		91	243
710 C3 B	375	340	300	350	400	435	M20x2.5 no.16	M20x2.5 no.16		91	243
711 C3 B	425	325	290	410	455	490	M20x2.5 no.24	M20x2.5 no.24		110	265
713 C3 B	425	325	290	410	455	490	M20x2.5 no.24	M20x2.5 no.24		110	280
715 C3 B	500	460	420	460	510	550	M20x2.5 no.24	M20x2.5 no.24		130	315
716 C3 B	500	460	420	460	500	550	M24x3 no.24	M18x1.5 no.36		165	308
717 C3 H	570	510	450	560	610	660	M30x3.5 no.20	M24x3 no.24		170	350
718 C3 H	570	510	450	576	626	670	M24x3 no.30	M24x3 no.20	170	350	

## TRACK DRIVES



### 700CE SERIES

Bonfiglioli's 700CE planetary track drives have integrated a new high-power motor density electric motor, instead of a conventional hydraulic motor. This complete mechatronic solution is designed for low and high voltage system.



ELECTRIC SOLUTIONS



FELLER  
BUNCHERS



LOG  
LOADERS



MULCHER  
MACHINES

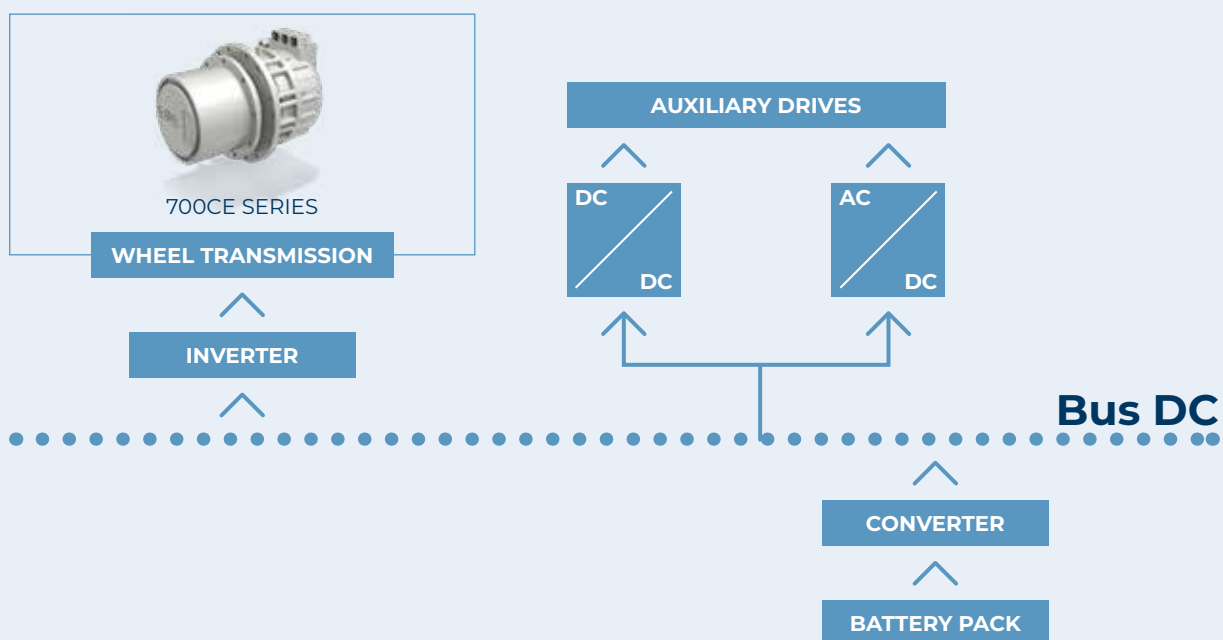


RICE  
HARVESTERS



SUGAR CANE  
HARVESTERS

### FUNCTIONAL DIAGRAM







## 700CE Series

Track Drives

### KEY FEATURES

- Shorter axial length thanks to PM e-motor
- Fully integrated design
- Integrated electromagnetic parking brake
- Integrated speed and temperature sensors
- High protection rating



## BPM 200 MOTOR Series

Pump Drives

### KEY FEATURES

- Permanent magnet motors
- Suitable for 48-400 Vdc batteries
- Air-cooled
- Aluminum housing
- Protection rating >IP65
- SAE flanges available



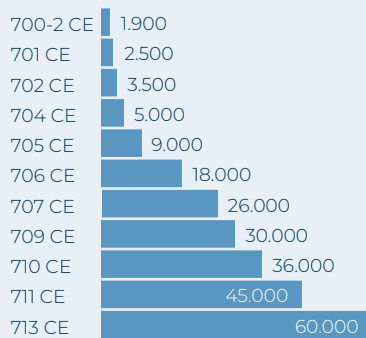
## BPM 240 MOTOR Series

Pump Drives

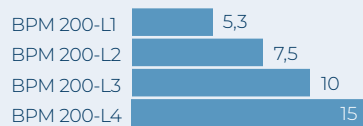
### KEY FEATURES

- Permanent magnet motors
- Suitable for 400-800 Vdc batteries
- Water cooled
- Alluminium / Cast Iron housing
- Protection rating >IP65
- SAE flanges available

### TORQUE (Nm)



### NOMINAL POWER (kW)



### NOMINAL POWER (kW)



## TRACK DRIVES



### F SERIES

The F Series is perfectly suited to any crawler and milling machine. Thanks to compact, rugged design, high torque and load capabilities, these solutions are the best possible option. All units available with a fail-safe parking brake and for most cartridge type fixed or variable systems. Different disengagement systems are available on demand for all the sizes.



HYDRAULIC SOLUTIONS



ELECTRIC SOLUTIONS



FELLER BUNCHERS



LOG LOADERS



MULCHER MACHINES



RICE HARVESTERS



SUGAR CANE HARVESTERS

### GEAR RATIOS

• 14 ... 824

### STANDARD FEATURES

- Compact structure
- High performance
- 3-7 Planetary wheels per stage
- Notchless ground tooth root
- Different ratios
- Integrated disc-brake

### SPECIAL EXECUTIONS ON REQUEST

- Mechanical disconnect device
- Low and high temperature version

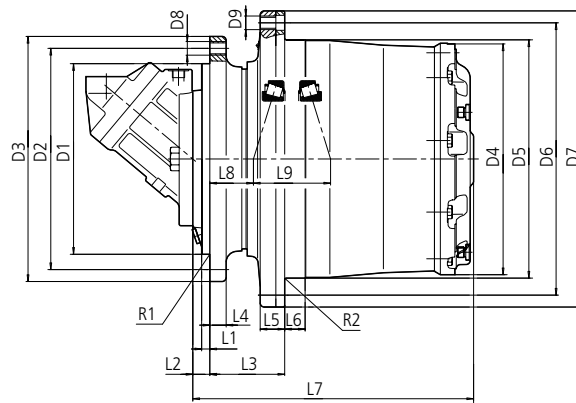
### TORQUE (Nm)

F13A	13.000
FD20	20.000
F30	30.000
F40	40.000
F40A	40.000
F55	55.000
F55A	55.000
F55B	55.000
F80	80.000
F80XR	80.000
F100	100.000
F100XR	100.000
F130	130.000
F130XR	130.000
F180	180.000
F180XR	180.000

*Stated torques are peak values for short duration.*



TYPE	RANGE OF RATIOS <sup>2</sup>	CAPACITY OF BEARING		WEIGHT <sup>4</sup>	MULTI-DISK BRAKE		HYDRAULIC MOTOR	
		C-dynamic	Co-static		Locking torque	Release pressure min.	Plug-in fixed	Plug-in variable
	i	kN	kN	kg	Nm	bar	ccm	ccm
F13A	41 <sup>(1)</sup> ÷ 229	132	255	50	200	17	28-30-32	28-45
FD20	81 ÷ 228	194/194	325/315	72	300	16	28-30-32	28-45
F30	19 <sup>(1)</sup> ÷ 305	132/194	255/325	94	300 (255; 400) <sup>3</sup>	16 (16; 22) <sup>3</sup>	28-30-32-40-45-56-60-63	28-45-55-60
F40	19 <sup>(1)</sup> ÷ 181	224	405	115	420	18	40-45-56-60-63	55-60
F40A		224	405	123	420	18	80-90	80
F55	16 <sup>(1)</sup> ÷ 185	224	405	165	420 (390; 500) <sup>3</sup>	15 (15; 21) <sup>3</sup>	80-90	80
F55A		224	405	177	420 (390; 500) <sup>3</sup>	15 (15; 21) <sup>3</sup>	40-45-56-60-63	55-60
F55B		224	405	181	420 (390; 500) <sup>3</sup>	15 (15; 21) <sup>3</sup>	-	107-110
F80	19 <sup>(1)</sup> ÷ 206	300	570	230	600 (375; 550; 1.000) <sup>3</sup>	18 (18; 19; 28) <sup>3</sup>	80-90-107-110-125-160-180	80-107-110-160
F80XR		300	570	240	600	18	80-90-107-110-160-180	
F100	21 <sup>(1)</sup> ÷ 226	498	1.010	330	600 (900) <sup>3</sup>	15 (13) <sup>3</sup>	107-125-160-180	107-110-160
F100XR		498	1.010	341	600	15		
F130	14 <sup>(1)</sup> ÷ 206	523	980	452	750	19	107-125-160-180	107-160
F130XR	81 ÷ 206	-	-	465	750	19		
F180	206 ÷ 824 <sup>(5)</sup>	787	1.650	636	1.375 (800) <sup>3</sup>	35 (35) <sup>3</sup>	160-180	160
F180XR		787	1.650	636	1.375 (800) <sup>3</sup>	35 (35) <sup>3</sup>	160-180	-



TYPE	L1	L2	L3	L4	L5	L6	L7	L8	L9	R1	R2	D1	D2	D3	D4	D5	D6	D7	D8	D9	QTY. D8/D9
F13A	10	30	72	13.5	15	16	255	28	79	0.6	0.6	190	230	256	216	220	260	290	M16x2	M16x2	12/8
FD20	10	41	75	15	28	25	300	15.3	86.3	2.5	2.5	240	275	304	250	270	305	335	M16x2	M16x2	18/18
F30	13	25/22	75	15	29	25	323/320	28.5	89	2.5	2.5	240	275	304	269	270	305	335	M16x2	M16x2	18/18
F40	16	16	91	21	34	26	338	38	100	2.5	2.5	240	285	320	294	295	335	370	M20x1.5	M20x1.5	20/20
F40A	13	35	91	21	34	26	357	38	100	2.5	2.5	270	310	345	294	295	335	370	M20x1.5	M20x1.5	16/20
F55	12	25	110	24	36	30	413	64	113	1	2.5	280	325	360	340	350	400	435	M20x1.5	M20x1.5	24/20
F55A	20	30	91	24	36	30	399	45	113	4	2.5	240	285	320	340	350	40	435	M20x1.5	M20x1.5	20/20
F55B	12	37	110	24	36	30	425	64	113	1	2.5	290	335	370	340	350	400	435	M20x1.5	M20x1.5	20/20
F80	20	35	90	22	37	24	415	34	123	4	2.5	330	370	410	374	400	450	490	M24x2	M24x2	20/20
F80XR	20	35	90	22	37	23	414.5	68.5	123	4	2.5	330	370	410	374	400	450	490	M20x1.5	M20x1.5	20/20
F100	35/37	35/37	165	28	53	43	461/463	32	139	10 (12)/60	5	390	460	500	407	408	460	500	M24x2	M24x2	30/24
F100XR	22	35	148	29	53	30	463	32	139	2.5	2.5	380	430	480	407	430	480	500	M24x3	M24x3	20/20
F130	45	45	190	35	58	45	530	50.5	147	25	4	390	500	550	449	450	500	550	M24x2	M24x2	32/32
F130XR	20	70	165	35	58	45	532	25	147	1.2	1.2	420	460	500	449	460	500	540	M24x3	M18x1.5	24/36
F180	30	30	168	40	56	21.5	534.5	50.3	141.4	4	3	450	510	560	528	535	600	650	M24x2	M27x2	30/30
F180XR	30	30	168	40	56	21.5	534.5	50.3	141.4	4	3	450	510	560	528	535	600	650	M24x2	M24x2	30/30

1) 2-stage on demand

2) Other ratios on demand

3) Optional brake torques

4) Without hydraulic motor

5) In combination with input bevel drive



## SLEW DRIVES



### 700T SERIES

The Bonfiglioli 700T series provides the safest, most effective solution for cranes, excavators and forestry machines. Highly appreciated by all major manufacturers, the 700T Series has long been established in the crane, excavator and special equipment industries.



HYDRAULIC SOLUTIONS



ELECTRIC SOLUTIONS



FELLER BUNCHERS



LOG LOADERS

#### BRAKE OPTIONS

- Hydraulically released parking brake on request
- DC and AC type

#### APPLICABLE MOTORS

- Piston hydraulic motors
- Hydraulic orbit motors
- Electric motors IEC

#### MOTOR OPTIONS

- Pressure relief valve
- Overcenter valve

#### KEY FEATURES

- Flange mounted
- Output shaft: splined or with
- Integral pinion
- Rugged construction
- High torque capacity
- Output shafts supported by heavy-duty capacity bearings

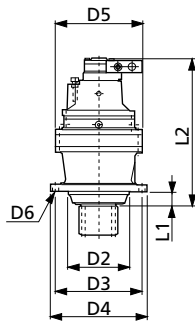
#### TORQUE (Nm)

705 T2	5.000
706 T2	7.500
707 T2	9.000
709 T2	12.000
710 T2	18.000
711 T2	20.000
712 T2	30.000
713 T3	40.000

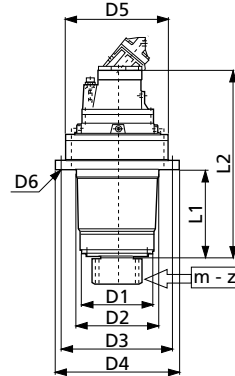


TYPE	RANGE OF RATIOS	MAX. INPUT SPEED	HYDRAULIC MOTOR DRIVE	MOTOR DISPLACEMENT	BRAKING TORQUE	MIN. OPENING PRESSURE	WEIGHT	DESIGN	MACHINE WEIGHT
	1:	min <sup>-1</sup>		cc/rev	Nm	bar	kg		tons
705 T2 F	12 ÷ 44	3.500	Axial piston motor fixed or variable displacement	28 - 80	50 - 400	10 - 30	55	A	Up to 10
705 T2 L	12 ÷ 44	3.500		28 - 80	50 - 400	10 - 30	80	B	Up to 10
706 T2 N	15 ÷ 46	3.500		28 - 80	400 - 1.000	20 - 30	95	B	14-16
707 T2 N	17 ÷ 47	3.500		28 - 80	400 - 1.000	20 - 30	140	B	16-18
709 T2 N	17 ÷ 47	3.500		45 - 110	400 - 1.000	20 - 30	165	B	18-22
710 T2 N	19 ÷ 38	3.500		45 - 110	400 - 1.000	20 - 30	250	B	22-28
711 T2 C	14 ÷ 39	3.500		60 - 160	400 - 1.000	20 - 30	300	B	28-35
711 T2 F	14 ÷ 39	3.500		60 - 160	400 - 1.000	20 - 30	160	A	28-35
712 T3 F	80 ÷ 200	3.500		60 - 200	400 - 1.000	20 - 30	450	A	35-40
712 T3 N	80 ÷ 200	3.500		60 - 200	400 - 1.000	20 - 30	450	B	35-40
713 T3 N	50 ÷ 300	3.500		60 - 200	400 - 1.000	20 - 30	500	B	Over 40

DESIGN A



DESIGN B



TYPE	D1	D2	D3	D4	D5	D6	L1	L2	M	Z
705 T2 F	-	175	245	272	245	18	41	440	Pinion module / number of teeth UPON REQUEST	
705 T2 L	180	195	245	290	245	13	171	470		
706 T2 N	200	250	325	360	292	17	225	560		
707 T2 N	230	280	314	348	345	17	295	670		
709 T2 N	250	280	380	420	345	17	295	720		
710 T2 N	300	425	460	500	400	22	360	730		
711 T2 C	300	425	460	500	428	22	345	735		
711 T2 F	500	320	500	560	425	22	70	750		
712 T3 F	-	410	450	490	420	ø21 no.24	120	900		
712 T3 N	400	425	470	510	420	ø20 no.30	350	900		
713 T3 N	340	400	510	560	445	22	420	1.030		

## SLEW DRIVES



### S SERIES

The Bonfiglioli S series provides the safest and most effective solution for cranes, excavators and forestry machines. Its compact design allows it to perfectly fit cranes, excavators and special equipment where installation space is limited.



HYDRAULIC SOLUTIONS



ELECTRIC SOLUTIONS



FELLER BUNCHERS



LOG LOADERS

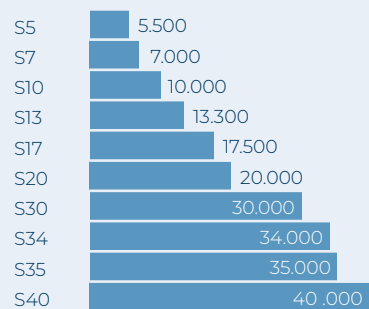
### GEAR RATIOS

• 23 ... 103

### STANDARD FEATURES

- Compact structure
- High performance
- Notchless ground tooth root
- Integrated disc-brake
- Suitable for various hydraulic motors

### TORQUE (Nm)

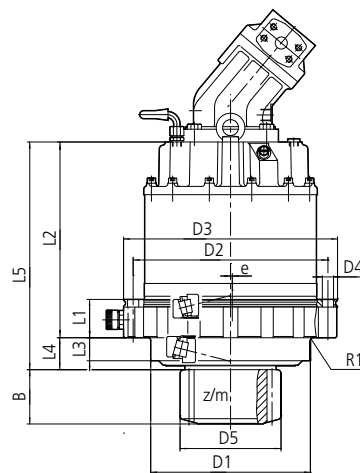


*Stated torques are peak values for short duration.*





TYPE	RATIOS <sup>1</sup>	HYDRAULIC MOTORS <sup>2</sup>	MULTI-DISC BRAKE		OUTPUT PINION <sup>3</sup>						WEIGHT WITHOUT MOTOR (appr.) kg	
			Braking torque Nm	Release pressure min. bar	z/m - B - D5							
S5	25-33	28-30-32	310	14	10/10 95 130	10/10 79 130	11/10 79 143	14/8 69 134	15/6,35 77 112	-	-	68
S7	23-27-33	45-56-63	475	14	10/11 79 141	12/10 79 151	13/10 79 158	13/10 98 155	-	-	-	98
S10	24-27-31-36	45-56-63-80-90	475	14	12/12 90 184	13/10 85 158	13/10 94.5 155	13/10 100 158	13/12 110 190	13/12 90 195	-	108-123
S13	36	56-63-80-90	740	18	10/14 99 181	11/14 99 198	12/12 99 184	13/12 88 195	13/12 <sup>4</sup> 110 <sup>4</sup> 190 <sup>4</sup>	14/12 110 199	14/12 110 201	147
S17	33	80-90	890	18	11/14 109 198	11/16 109 220	12/12 104 184	13/12 <sup>4</sup> 110 <sup>4</sup> 190 <sup>4</sup>	13/14 122 221	14/16 150 273	-	168
S20	103-79	45	553	18	13/16 120 249	-	-	-	-	-	-	260
S30	45	125	1.030	18	12/16 154 243	-	-	-	-	-	-	540
S34	45	160	1.030	18	12/16 154 243	-	-	-	-	-	-	480
S35	35	180	1.030	18	12/18 160 274	-	-	-	-	-	-	528
S40	62	90	574	18	12/16 100 235	-	-	-	-	-	-	274



TYPE	L1	L2	L3	L4	L5	D1	D2	D3	D4	E	R1
S5	60	262	31	40	302	175	260	288	12x17.5	-	6
S7	60	296	31	40.5	336.5	230	285	322	12x17.5	-	6
S10	60	306,5-314	36	50	356.5-364	250	305	335	18x17.5	-	4
S13	71	340	30(50) <sup>4</sup>	55(75) <sup>4</sup>	395(415) <sup>4</sup>	275	335	370	20x17.5	1	4
S17	86	355	50.5	55	410	275	335	370	20x17.5	-	4
S20	57	403	16	252	775	280	350	380	18	-	-
S30	332	737	33	65	802	350	415	450	24x22	-	1.6
S34	332	785	33	65	808	350	415	450	24x22	-	1.6
S35	239	653	30	91	744	400	460	500	24x26	2	10
S40	64	625	16	245	721	282	375	410	18	-	-

1) Other ratios on demand  
2) Other hydraulic motors on request

3) Output Pinion execution acc. to requirement  
4) Optional



# OUR PROJECTION INTO THE FUTURE

---

MORE THAN 250 EMPLOYEES AROUND THE WORLD ARE INVOLVED IN THE GROUP'S R&D ACTIVITIES.

## DESIGN SIMULATION

Bonfiglioli has the most advanced **virtual simulation techniques** that allow to speed up the validation process, thus reducing time to market and providing customers with optimized and efficient solutions.



## TEST LABORATORIES

In our R&D department we **research, develop, validate and certify** all the products and solutions which are engineered and manufactured in our plants across the world.



## CO-ENGINEERING

At Bonfiglioli we **work close to our customers to satisfy all their needs** and requirements with a true tailor-made solution.



# OUR CONSTANT AMBITION

---

QUALITY, HEALTH, SAFETY, ENVIRONMENT & ENERGY

## QUALITY: WE CARE ABOUT OUR CUSTOMERS

Our team is wholly dedicated to continuous improvement in the quality, safety, environmental and energy spheres throughout the entire value chain, from the smallest supplier to the end client. Bonfiglioli is committed to achieving the highest quality standards, and our products are intended to generate value for our customers while respecting both people and the environment. We design, manufacture and supply effective products and services that set a benchmark for quality in the industry.

Bonfiglioli management systems are certified ISO 9001: 2015, ISO 14001: 2015, ISO 45001: 2018 and ISO 50001:2018, while our products are covered by 7 international certifications. Responsibility, excellence and continuous improvement are the basic elements that make us the favored partner of our clients and suppliers.

## HEALTH & SAFETY: SUSTAINABILITY STARTS WITH SAFETY

Prevention of accidents and incidents is a key element of our company's sustainability strategy and an integral part of each one of our business processes. The successful management of risks is essential for protecting our employees and assets, thereby strengthening their contributions.

## ENVIRONMENT & ENERGY: RESPECT THE PRESENT TO BUILD THE FUTURE

At Bonfiglioli, we believe that respect for the present and the adoption of environmental protection and energy efficiency policies are essential if we are to enjoy a better future.

# OUR GLOBAL PRESENCE

Thanks to an international network of closely interconnected commercial and production sites, we can guarantee the same high standards of Bonfiglioli quality anywhere at any given time. We know that our direct presence in local markets is the key to long-lasting success, so our family includes 20 production sites, 26 commercial sites and more than 550 distributors around the world.

Our organization is always close by, offering complete and efficient solutions and supporting our customers with dedicated services, co-engineering and after-sales assistance.



**20**  
PRODUCTION SITES



**26**  
COMMERCIAL SITES



**80**  
COUNTRIES



**550**  
DISTRIBUTORS



**~4,800**  
PEOPLE

## AUSTRALIA

### Bonfiglioli Transmission (Aust.) Pty Ltd

2, Cox Place Glendenning NSW 2761  
Locked Bag 1000 Plumpton NSW 2761  
Tel. +61 2 8811 8000



## BRAZIL

### Bonfiglioli Redutores do Brasil Ltda

Av. Osvaldo Fregonezi, 171, cjs 31 e 44  
CEP 09851-015 - São Bernardo do Campo  
São Paulo  
Tel. +55 11 4344 2322



## CHINA

### Bonfiglioli Drives (Shanghai) Co. Ltd.

#68, Hui-Lian Road, QingPu District,  
201707 Shanghai  
Tel. +86 21 6700 2000



### Motion & Robotics

#568, Longpan Road, Jiading District,  
201707 Shanghai



### Bonfiglioli Trading (Shanghai) Co. Ltd.

Room 423, 4<sup>th</sup> Floor, #38, Yinglun Road,  
China (Shanghai) Pilot Free Trade Zone,  
Shanghai



### Selcom Electronics (Shanghai) Co., Ltd

A7, No.5399, Waiqingsong Road, QingPu  
District,  
201707 Shanghai  
Tel. +86 21 6010 8100



A24, No.5399, Waiqingsong Road, QingPu  
District,  
201707 Shanghai

Tel. +86 21 6010 8100



## FRANCE

### Bonfiglioli Transmission S.A.S.

14 Rue Eugène Pottier  
Zone Industrielle de Moimont II  
95670 Marly la Ville  
Tel. +33 1 34474510



## GERMANY

### Bonfiglioli Deutschland GmbH

Sperberweg 12 - 41468 Neuss  
Tel. +49 0 2131 2988 0



### Bonfiglioli Vectron GmbH

Europark Fichtenhain B6 - 47807 Krefeld  
Tel. +49 0 2151 8396 0



### O&K Antriebstechnik GmbH

Ruhrallee 8-12 - 45525 Hattingen  
Tel. +49 0 2324 2050 1



## INDIA

### Bonfiglioli Transmission Pvt. Ltd.

**Mobility & Wind Industries**  
AC 7 - AC 11 Sidco Industrial Estate  
Thirumudivakkam Chennai - 600 044  
Tel. +91 844 844 8649



### Discrete Manufacturing & Process Industries - Motion & Robotics

Survey No. 528/1,  
Perambakkam High Road Mannur Village,  
Sriperumbudur Taluk Chennai - 602 105  
Tel. +91 844 844 8649



### Discrete Manufacturing & Process Industries

Plot No.A-9/5, Phase IV MIDC Chakan,  
Village Nighoje Pune - 410 501  
Tel. +91 844 844 8649



## ITALY

### Bonfiglioli Riduttori S.p.A.

#### Discrete Manufacturing & Process Industries

Via Cav. Clementino Bonfiglioli, 1  
40012 Calderara di Reno  
Tel. +39 051 6473111



#### Discrete Manufacturing & Process Industries

Via Sandro Pertini, lotto 7b  
20080 Carpiano  
Tel. +39 02985081



#### Discrete Manufacturing & Process Industries

Via Saliceto, 15 - 40010 Bentivoglio



#### Mobility & Wind Industries

Via Enrico Mattei, 12 Z.I. Villa Selva  
47122 Forlì  
Tel. +39 0543 789111



#### Motion & Robotics

Via Unione, 49 - 38068 Rovereto  
Tel. +39 0464 443435/36



### Selcom Group S.p.A.

Via Achille Grandi, 5  
40013 Castel Maggiore (BO)  
Tel. +39 051 6387111



Via Marino Serenari, 18  
40013 Castel Maggiore (BO)

Tel. +39 051 6387111



Via Cadriano, 19  
40057 Cadriano (BO)  
Tel. +39 051 6387111



## NEW ZEALAND

### Bonfiglioli Transmission (Aust.) Pty Ltd

88 Hastie Avenue, Mangere Bridge,  
2022 Auckland  
PO Box 11795, Ellerslie  
Tel. +64 09 634 6441



## SINGAPORE

### Bonfiglioli South East Asia Pte Ltd

8 Boon Lay Way, #04-09,  
8@Tadehub 21, Singapore 609964  
Tel. +65 6268 9869



## SLOVAKIA

### Bonfiglioli Slovakia s.r.o.

Robotnícka 2129  
Považská Bystrica, 01701 Slovakia  
Tel. +421 42 430 75 64



## SOUTH AFRICA

### Bonfiglioli South Africa Pty Ltd.

55 Galaxy Avenue, Linbro Business Park,  
Sandton, Johannesburg  
2090 South Africa  
Tel. +27 11 608 2030



## SPAIN

### Tecnotrans Bonfiglioli S.A

Avinguda del Ferrocarril, nº 14,  
Polígono Industrial Can Estapé  
08755 Castellbisbal - Barcelona  
Tel. +34 93 447 84 00



## TURKEY

### Bonfiglioli Turkey Jsc

Atatürk Organize Sanayi Bölgesi,  
10007 Sk. No. 30  
Atatürk Organize Sanayi Bölgesi,  
35620 Çiğli - İzmir  
Tel. +90 0 232 328 22 77



## UNITED KINGDOM

### Bonfiglioli UK Ltd.

Unit 1 Calver Quay, Calver Road, Winwick  
Warrington, Cheshire - WA2 8UD  
Tel. +44 1925 852667



## USA

### Bonfiglioli USA Inc.

3541 Hargrave Drive  
Hebron, Kentucky 41048  
Tel. +1 859 334 3333



## VIETNAM

### Bonfiglioli Vietnam Ltd.

Lot C-9D-CN My Phuoc Industrial Park 3  
Ben Cat - Binh Duong Province  
Tel. +84 650 3577411



PRODUCTION



ASSEMBLY



SALES



SERVICE



We have a relentless commitment to excellence, innovation & sustainability. Our team creates, distributes and services world-class power transmission & drive solutions to keep the world in motion.

#### HEADQUARTERS

##### Bonfiglioli S.p.A

Via Cav. Clementino Bonfiglioli, 1  
40012 Calderara di Reno - Bologna (Italy)  
Tel. +39 051 6473111

